

PROVIA — The World Adaptation Science Programme

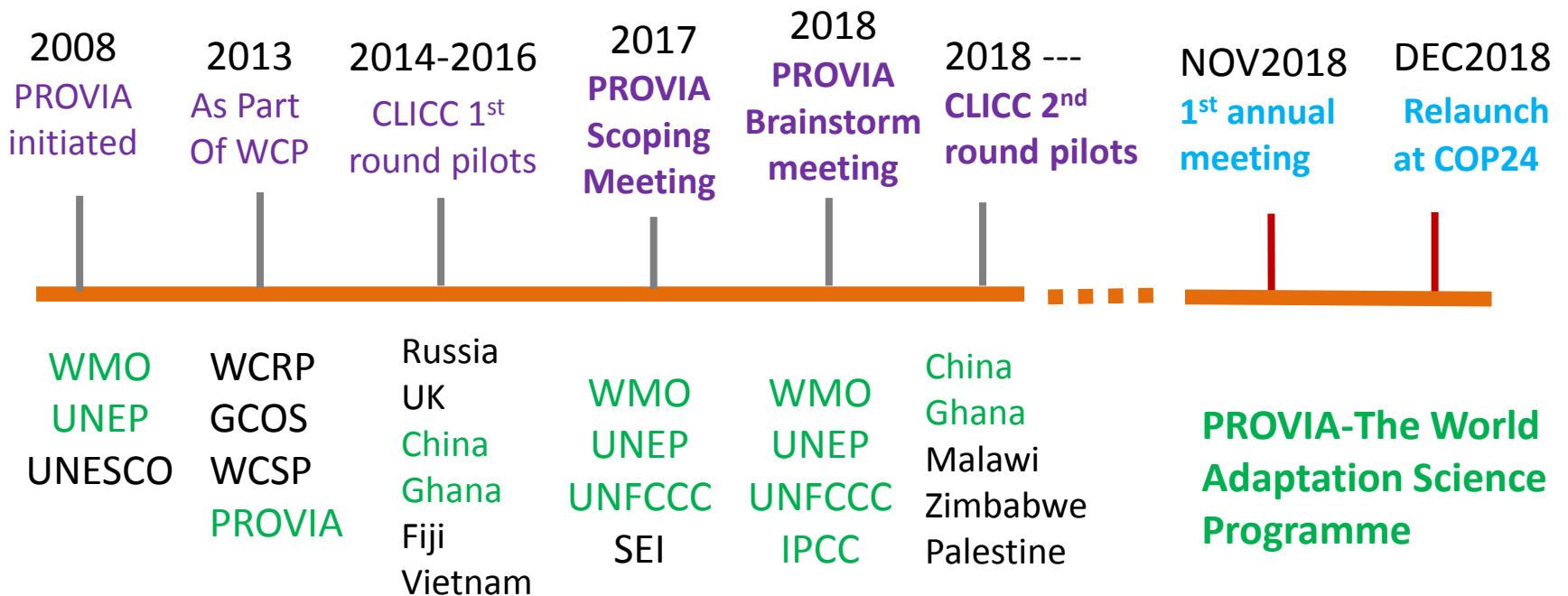
Presentation to GCOS SC 25th Session,
25 October 2018, Helsinki, Finland

Mr. Hartwig Kremer, PhD, UN Environment

Content:

- **History**
- **Revitalization**
- **New Governance, Strategy**
- **Current Work**
- **2018 Steps**
- **Deliverables**
- **Implications for GCOS**

PROVIA is part of the **World Climate Programme** which is led by WMO, as decided in **WMO Resolution 18** of the WMO Congress XVI (16), with Secretariat hosted by UNEP.



Products: (1) **Technical Guidance on Assessing Vulnerability, Impacts and Adaptation to Climate Change** : four publications;
 (2) **Adaptation Futures Conferences**: once every two years;
 (3) **CLICC**: country level CC impacts.

September 2017 — Scoping Meeting
Programmatic challenges and opportunities

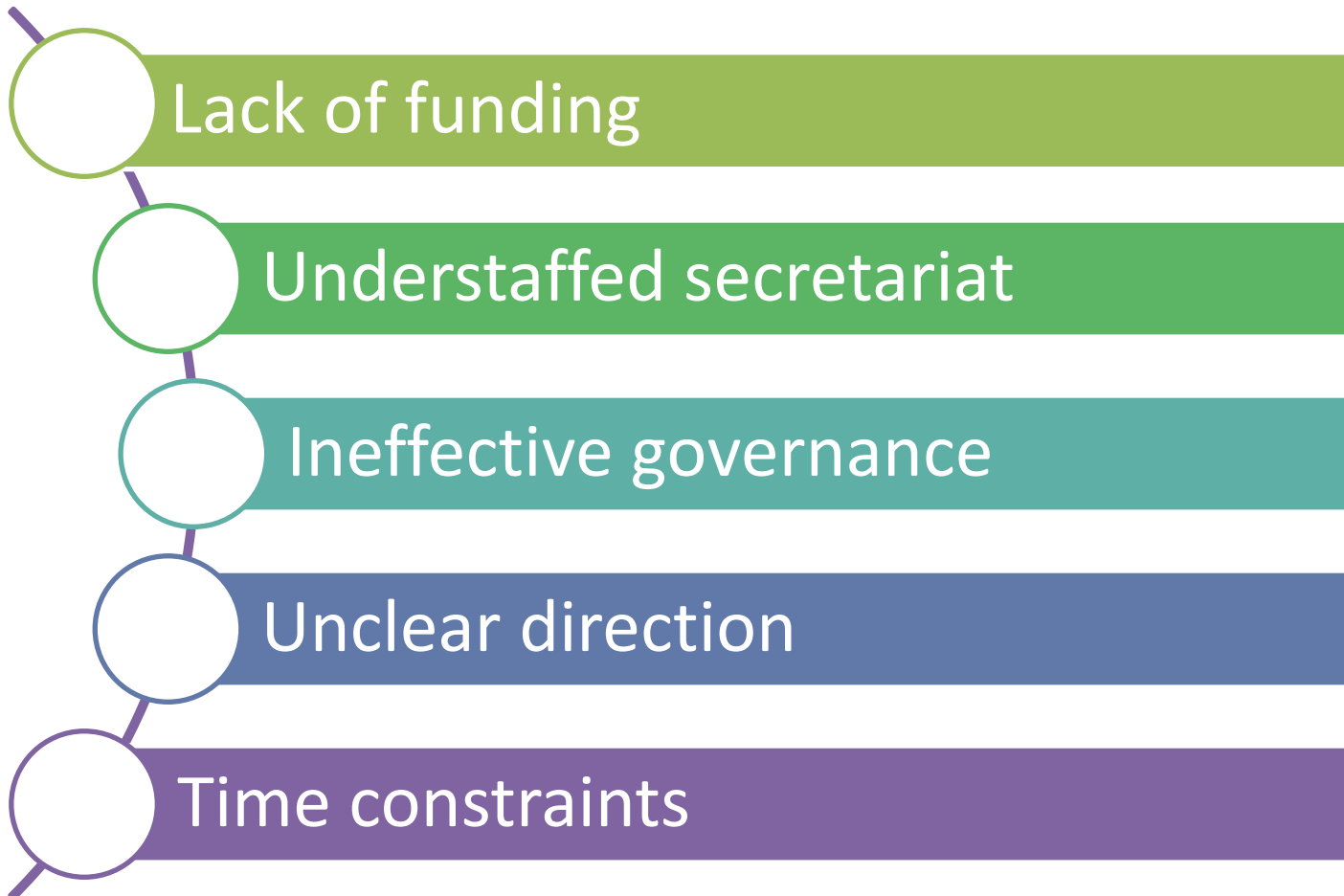
March 2018 — Brainstorm Meeting
Identify PROVIA's niche, mandate, enabling conditions, and possible low-hanging fruits

14-16 November 2018 — First Annual Meeting
Adopt new governance structure, TORs, strategy, work plan and budget

**Coming
Soon**

December 2018 — Relaunch of PROVIA
Relaunch PROVIA as the World Adaptation Science Programme during COP24 in Katowice 2018

Challenges inherited from the past — Looking towards the Future



Challenges inherited from the past — Looking towards the Future

- Apply a ***country demand-driven***, service-oriented approach
- Engage and foster ***multiple stakeholders and sponsors***
- Identify ***knowledge gaps*** and drive the ***research agenda***
- Focus on green and innovative ***adaptation solutions***
- Develop ***pilots*** and share ***high-impact products/services***
- ***Inform policy/decision makers*** on science-based adaptation
- Support implementation of ***National Adaptation Plans (NAPs)***

Mandate

- Promoting applied research for effective climate adaptation
- Facilitating knowledge transfer and sharing
- Harmonizing research at a regional scale

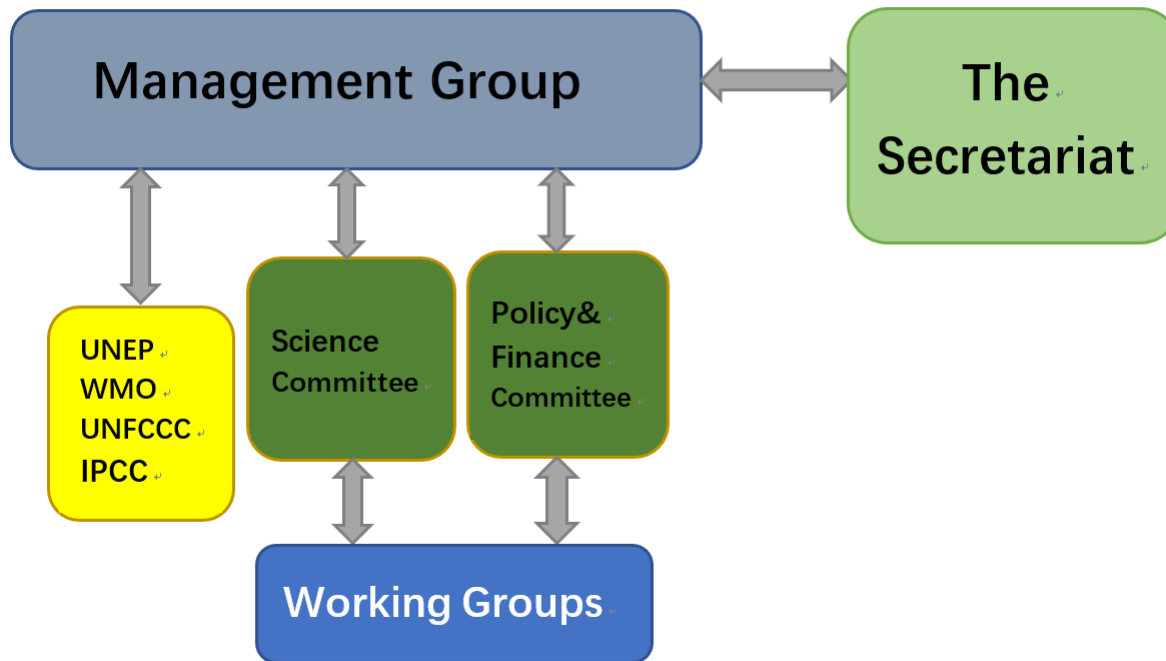
Governance

- Establish Policy and Finance Committee
- New Governance Terms of Reference
 - More inclusive governance structure towards the wider adaptation stakeholder community

Activities

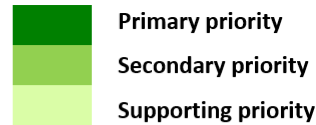
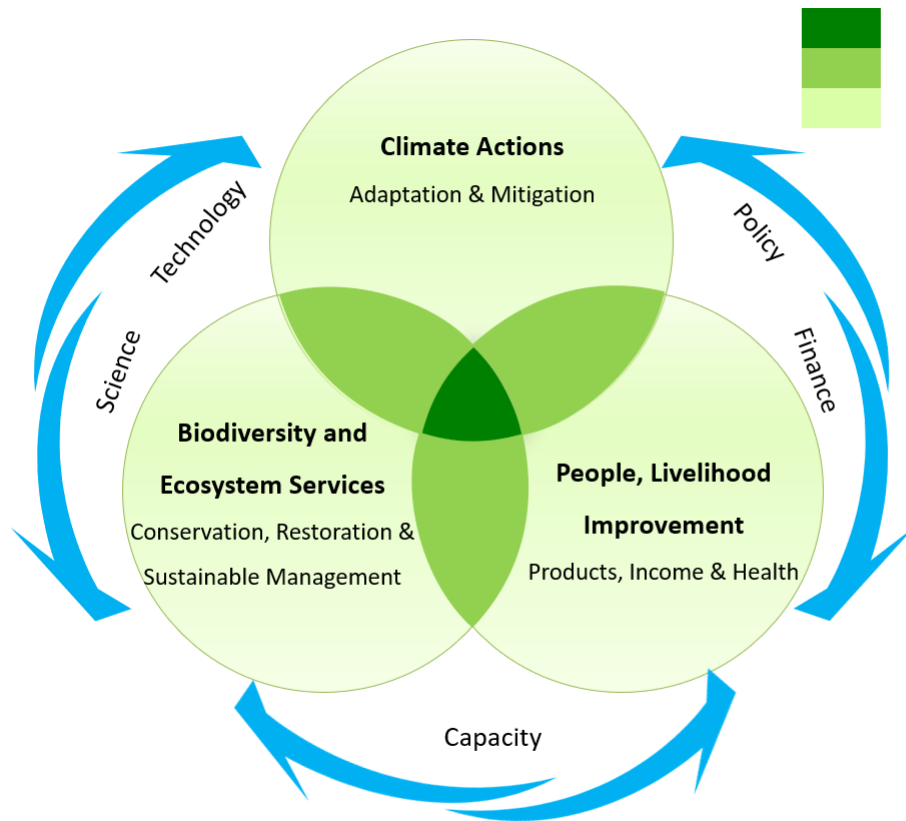
- Develop PROVIA Strategy for the next four years
- Organized the first Annual Meeting of PROVIA with new governance structure
- Relaunch PROVIA as the World Adaptation Science Programme at COP24

Governance Structure and Operation Modality



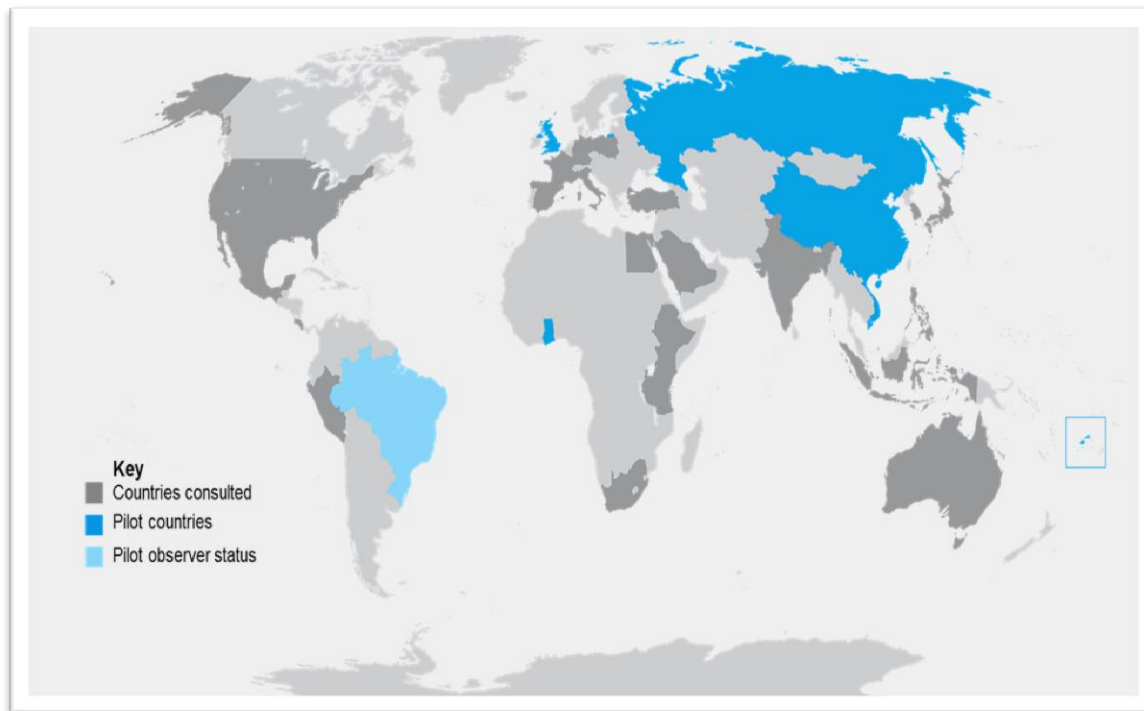
- Committees (Science as well as Policy/Finance) are lead by two Co-chairs (two-year basis):
- Science Committee: ca 10 scientists, academicians
- Policy & Finance Committee: ca 10 policy experts, leaders from the financial sector
- The Management Group: 8 members, UNEP, WMO, UNFCCC, IPCC, plus the four Committee Co-chairs (chaired on a two-year rotational basis)
- Chair of the Management Group (mid-2018 to mid-2020), Dr. Jian Liu, UN Environment

PROVIA acts as an international panel, comprised of international and national scientists, policy leaders, investors, bankers and private sector representatives.



- Focus on climate adaptation science and services to support the **UNFCCC** intergovernmental process and **IPCC** reporting
- *Three primary objectives on the climate change adaptation arena:*
 1. *facilitating the **science, data and knowledge** transfer and*
 2. *providing/ sharing scientific **knowledge on climate change vulnerabilities and impacts** in conjunction with **consequences and risks of inaction**, and*
 3. *better linking **the science to the policy; to climate finance** (large and small scale; innovation)*

Currently, PROVIA is implementing the *CLICC project* focusing at **Country Level Impacts of Climate Change** – the goal is to support NAPs:



- facilitate global and national **understanding of country-level climate impacts**
- **support climate action** through consistent and **comparable communication of impacts and risks**
- promote **good practice and collective learning** in assessing climate impacts.

Pilots will be implemented in China, Ghana, Zimbabwe, Malawi and Palestine

CLICC Process

CLICC TEMPLATES

IMPACT RATINGS

Observed climate impacts						
Sector	Observed climate impacts	Global impact rating (high / Medium / Low) (Please use Technical Guidelines Section 4.2 for rating method)	National impact rating (high / Medium / Low) (Please use Technical Guidelines Section 4.2 for rating method)	Confidence rating (Very low / Low / Medium / High) (Please use Technical Guidelines Section 5.1.1 for rating method)	Data quality rating (Low / Medium / High) (Please use Technical Guidelines Section 5.2.2 for rating method)	Time period
EXAMPLE Food security and food systems	Greater variability in crop yields due to higher temperatures and greater variability in rainfall	Medium	High	Low-Medium	Medium	2010-2050

Projected climate impacts						
Sector	Projected climate impacts	Impact rating (high / Medium / Low) (Please use Technical Guidelines Section 4.2 for rating method)	Confidence rating (Very low / Low / Medium / High) (Please use Technical Guidelines Section 5.1.1 for rating method)	Data quality rating (Low / Medium / High) (Please use Technical Guidelines Section 5.2.2 for rating method)	Time period	Metadata (Please see Annex 1 below and Technical Guidelines Section 6 for further details)
EXAMPLE Food security and food systems	If it uncertain how climate change will affect yields of crops? Some models suggest a north-south divide with increased yields (especially of wheat) in the north and decreases in the south?	Low	Very Low	Medium	2050-2099	5.1-5.2

META DATA & DATA QUALITY ASSESSMENT

Metadata	
Metadata identifier	2.1.2.2
Explanation for impact rating (Explanation of the impact rating given and how it relates to the specific information in question)	EXAMPLE Low - Low vulnerability and low climate exposure result in a low impact rating.
Explanation for Confidence rating (Explanation of the confidence rating given and how it relates to the specific information in question)	EXAMPLE Very low - only 2 studies available which are of low-quality analysis with little agreement between studies or experts.
Climate projections, emissions scenarios, or models used (if relevant)	
Source(s) (e.g., document, study, report, etc.)	
Notes (if applicable)	
Additional assumptions (if applicable and not covered by common ratings)	
Additional limitations (if applicable and not covered by common ratings)	

Data quality assessment (Use the default assessment)		
Data Quality Criteria	Levels	Score
1. Transparency and availability	1. Data unavailable to public 2. Limited summary data available 3. Full complementary data set and metadata available	
2. Verification	1. Unverified data 2. Limited verification checks in place 3. Detailed verification in place and documented	
3. Frequency of updates	1. Sporadic 2. Less than 5 years 3. Annual or biennial	
4. Security	1. Future data collection discontinued 2. Future data collection uncertain 3. Future data collection secure	
5. Spatial coverage	1. Partial national coverage 2. National coverage, some bias 3. Full national coverage, including adjacent marine areas, if and where appropriate	
TOTAL		
Total score should be rated as follows: 5 to 8 (Low), 9 to 11 (Medium), 12 to 15 (High)		Out of 15

CLICC VISUALISATION

DASHBOARD



PROFILE

CLICC Profile	
Profile	
Baseline scenario	
Section 3: Observed climate change and climate extremes	
Section 4: Future climate projections	
Section 5: Risks of climate change	
5.1. Food security and food production systems	
5.2. Freshwater resources	
5.3. Coastal systems and low-lying areas	
5.4. Urban areas	

Section 6: Resilience to climate change	
Section 7: Adaptation to climate change	
Section 8: Planned work, research gaps and future research	
Section 9: Communication, education and awareness	
Section 10: Governance and institutionalisation	
Annexes: Annex 1. Publications, data sources and evaluation	

SEE THE CLICC LEARNING JOURNEY

Adaptation Futures 2018

Facilitate dialogue between research and government, civil society, international agencies and business

Continue the shift from problem diagnosis to solutions and innovations

Link adaptation action to sustainable development, investment and planning

Have a strong focus on Africa and the Global South

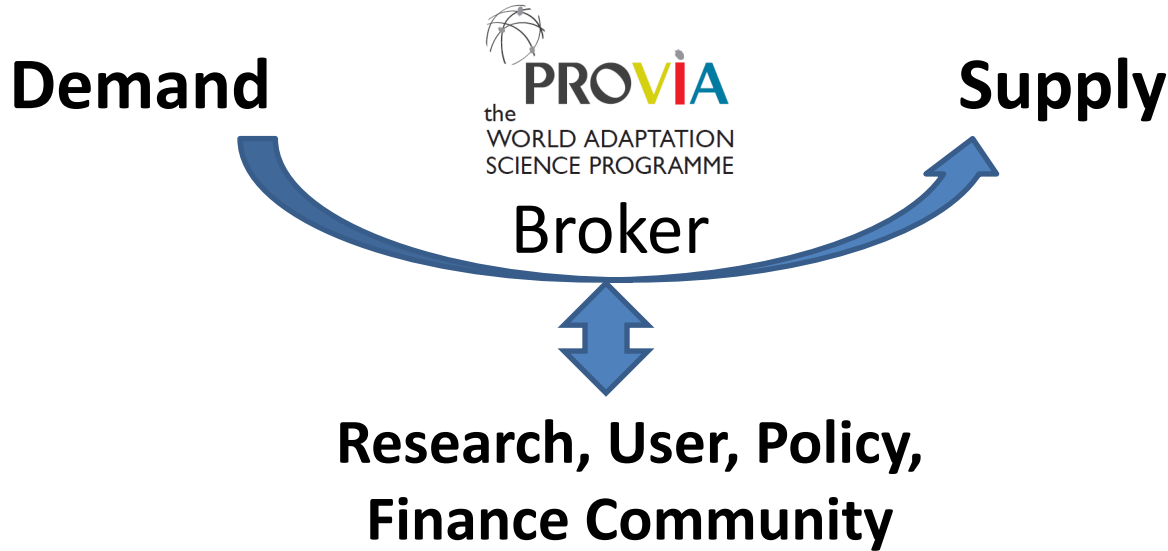
For Example in 2019:

- **PROVIA**

1. Technical guidance on assessing vulnerability, impacts and adaptation to climate change;
2. Adaptation Gap Report;
3. Research Priorities Report;
4. Project proposal aims to contribute to close adaptation knowledge gaps at sub regional level.

- **CLICC**

1. Country Report on the second round of CLICC pilots;
2. CLICC Technical Guidance;



Data Resource ECV



- National
- Sub-regional, Regional
- International

Methodology



- Technical Guidance, Template, Model, etc
- Technical Support, Capacity Building, etc.
- Transparent, Consistent, Comparability, QA, etc.



More information for PROVIA:

<https://www.unenvironment.org/explore-topics/climate-change/what-we-do/adaptation-science>

More information for CLICC:

<https://www.unenvironment.org/explore-topics/climate-change/what-we-do/adaptation-science/communicating-country-impacts>

Thank You