

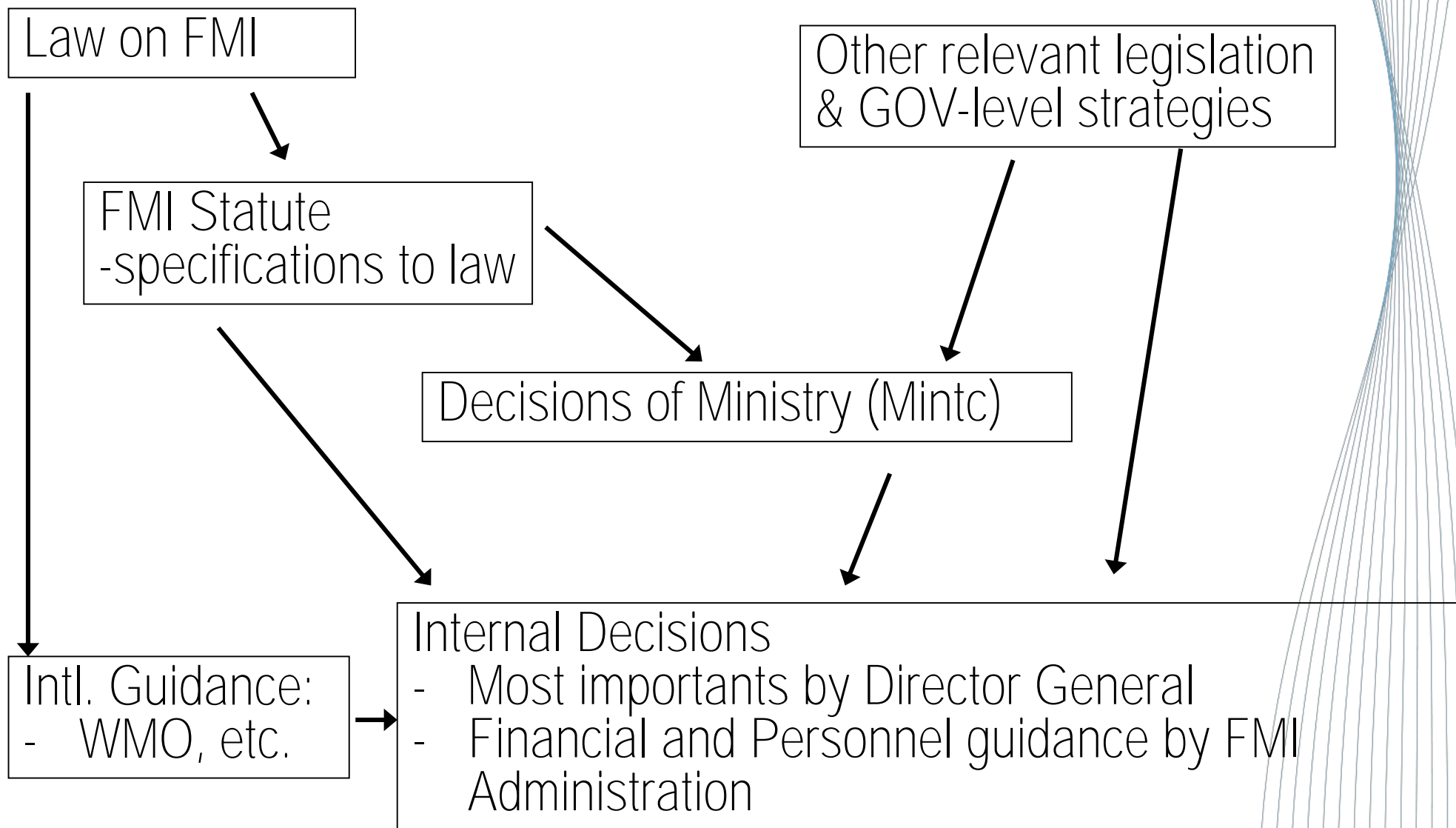


FINNISH METEOROLOGICAL INSTITUTE



THE FINNISH METEOROLOGICAL INSTITUTE
STRATEGY 2025

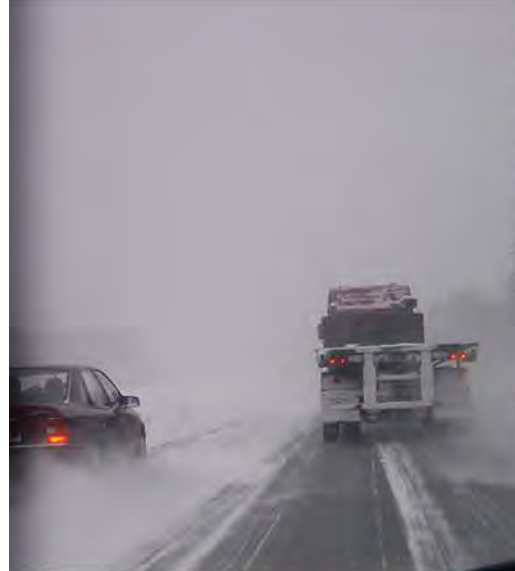
Framework





FMI - mission

- The FMI works for the safety and success of the Finnish society.
- The FMI provides high-quality services and scientific know-how on the weather, atmosphere and seas for the safety of the society and businesses.
- All services are based on high-quality research, observations and expertise.





**CUSTOMER-ORIENTED
SERVICES**

FOR THE NEEDS OF
A CHANGING SOCIETY

**HIGH-QUALITY RESEARCH
AS A SERVICE**

SUPPORT FOR
DECISION-MAKING

VISION

**BEST SELECTION
OF SERVICES**

FOR THE SAFETY AND
SMOOTH OPERATION
OF THE SOCIETY

**STRATEGIC
INFRASTRUCTURES**

INFORMATION AND
COLLABORATION

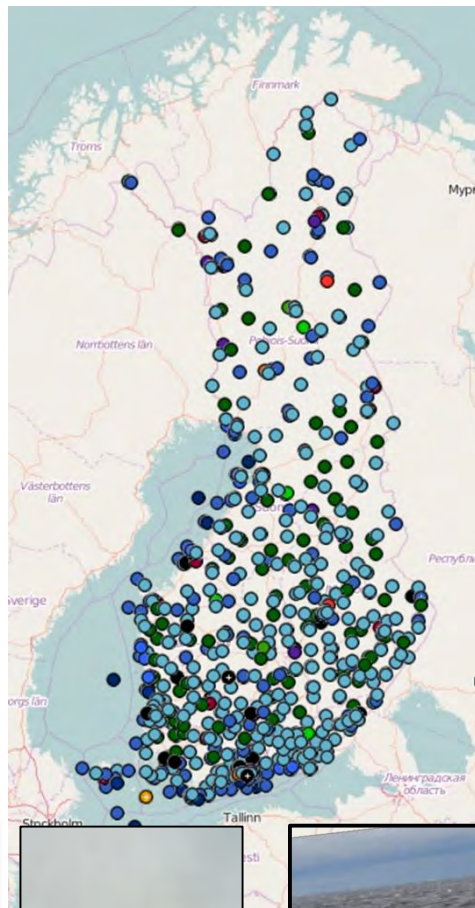
**SMOOTH,
DIGITALIZED PRODUCTION**

ENABLING
SERVICES



ILMATIETEEN LAITOS
METEOROLOGISKA INSTITUTET
FINNISH METEOROLOGICAL INSTITUTE

Strategic infra

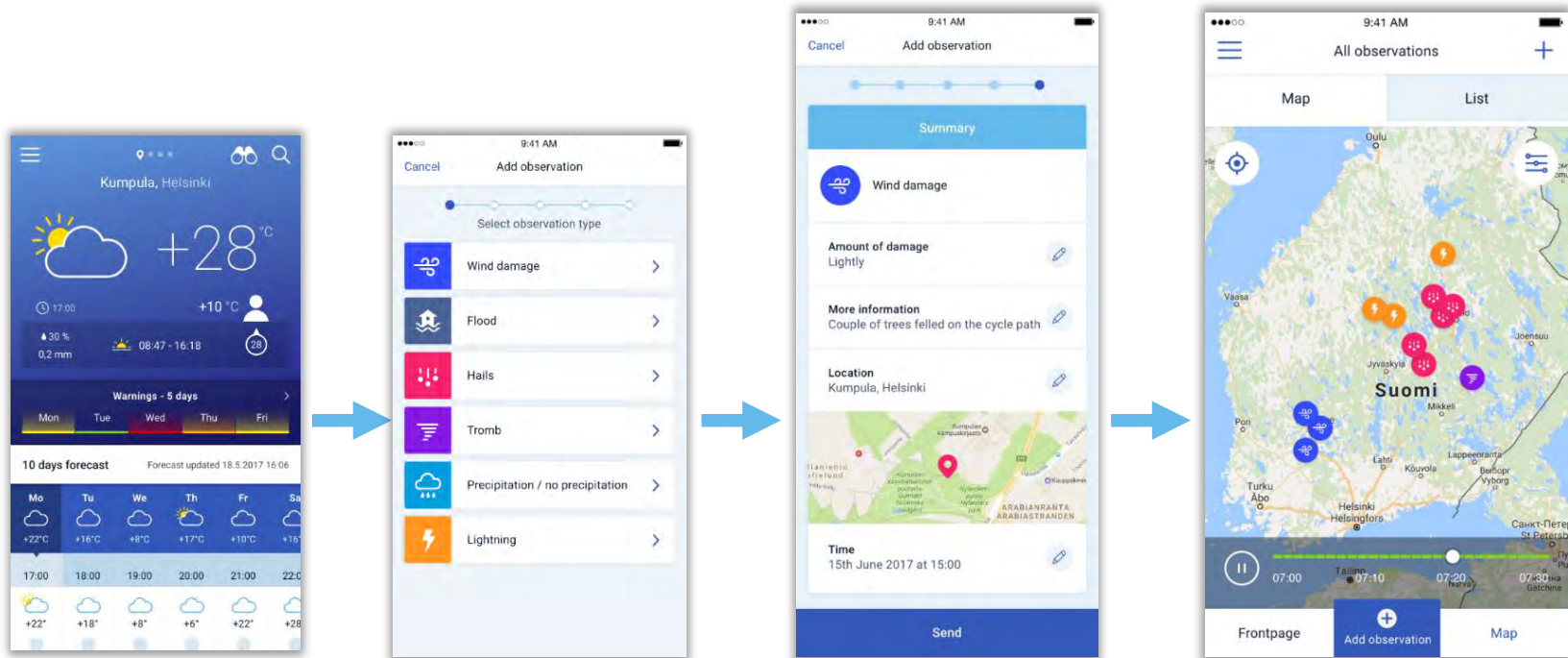


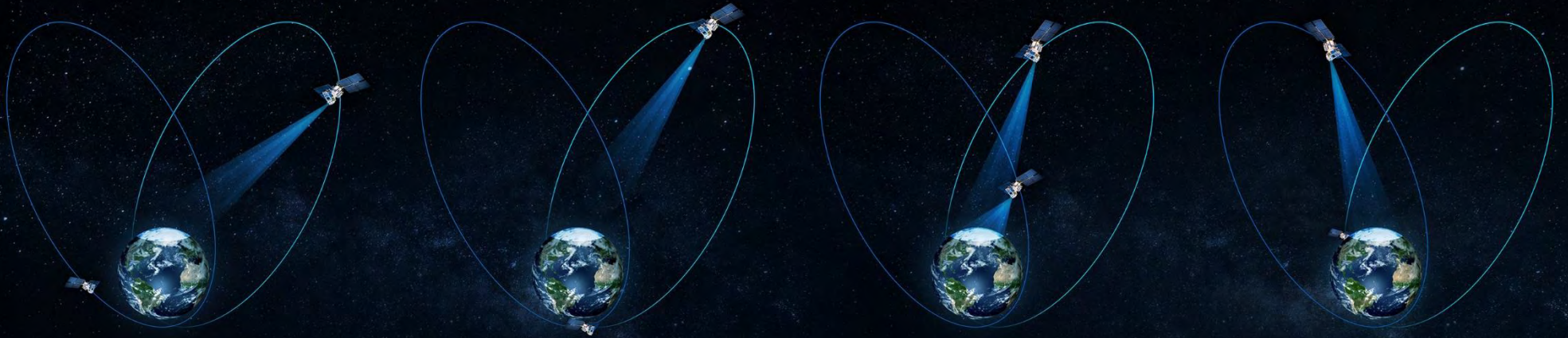
FMI DATA



Crowdsourcing – new datasources

- Use of social sensor network and Internet of Things (automobiles, cell phones..)



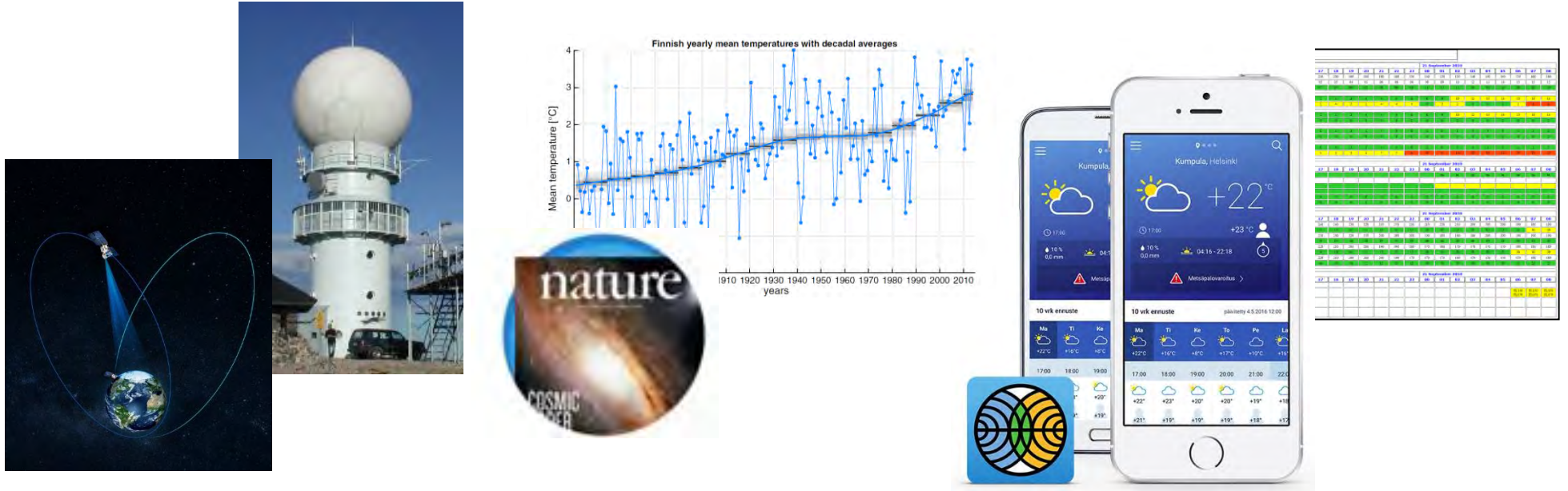


A man in a tan jacket is working on a rooftop meteorological instrument. The instrument has a large, circular, white, cylindrical top section and a vertical pole with various sensors. A bright green laser beam is visible in the background, pointing upwards. The scene is set against a clear blue sky with a hint of sunset or sunrise in the distance.

HIGH-QUALITY RESEARCH AS A SERVICE -
SUPPORT FOR DECISION-MAKING



Decision-making based on facts



- Meteorological community supports decision-making in all levels of the society and in different time-scales
 - Citizens, authorities, businesses, policy-makers
 - Everyday decision-making to long-term strategic and political planning
- International cooperation, observations, research and services all crucial to support fact-based decision-making



SMOOTH, DIGITALIZED PRODUCTION –
ENABLING SERVICES



Smooth, digitalized production – enabling services

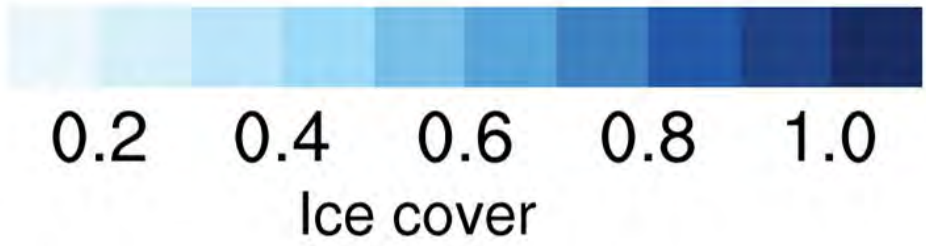
- Unique production system operating 24/7
- High-performance computing and related applications
- Programme development and open source
- Information, service and open data distribution systems
- International cooperation





CUSTOMER-ORIENTED SERVICES –
FOR THE NEEDS OF A CHANGING SOCIETY

Forecast week 6



Sea Ice Extent, 17 Mar 2018





Sustained MET-cooperation is the key!

All levels should be included:

- Scientific collaboration
- Common development of strategic MET-infra
- Services with strong customer orientation
- Indigenous peoples' knowledge and requirements

Increasing our common ambition level:

- Sharing of the best practices and avoiding unnecessary overlapping
- Understanding risks and being cost-effective
- Understanding stakeholders, customers and business-models
- Better services means
 - increased safety, and
 - sustained environment

